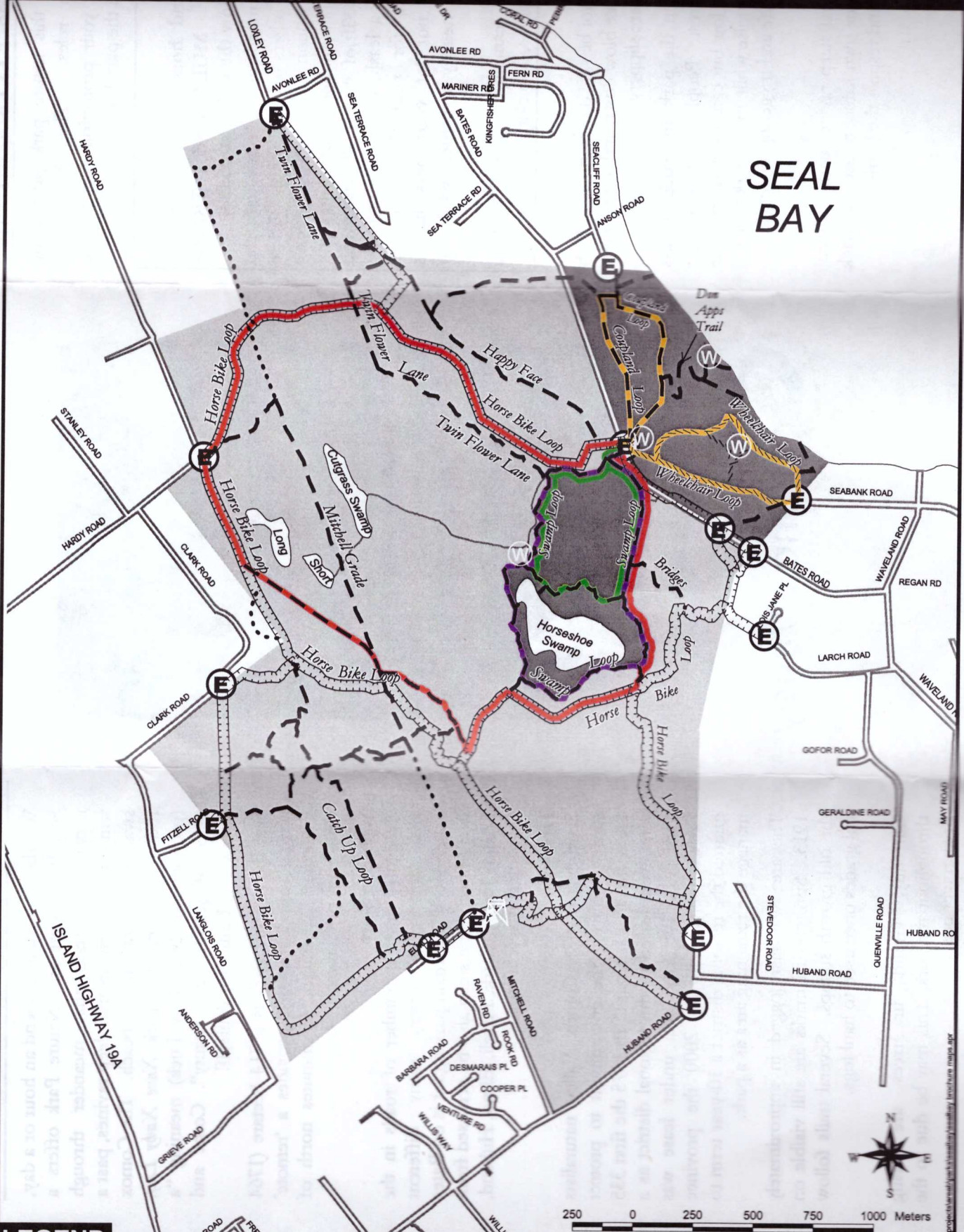


**SEAL BAY**



**LEGEND**

- TRAILS:**
- ..... Closed (NO ACCESS)
  - Horse/Bike (follow yellow markers)
  - - - - Pedestrian Only (follow orange markers)
  - ////// Wheelchair Access

- E** Park Entrance
- W** Washroom
- Water Tower

**Marked Running Trails**

- 7.0km Loop
- 3.6km Loop
- 3.1km Loop

**TRAIL DISTANCES**

- \* ALL TRAIL DISTANCES IN KM EXCEPT WHERE INDICATED
- Bridges - 359 metres
  - Catch Up Loop - 2.0
  - Coupland Loop - 1.5
  - Don Apps - 605 metres
  - Happy Face - 920 metres

© 2005 Seal Bay Park Board. All rights reserved. Seal Bay Park Board. All rights reserved.